

Appendix G

ESATAN/TMG Demonstration

Henri Brouquet
(ALSTOM, United Kingdom)

Thermal & ECLS Software Workshop
Oct 2006

ALSTOM

ESATAN™ / TMG

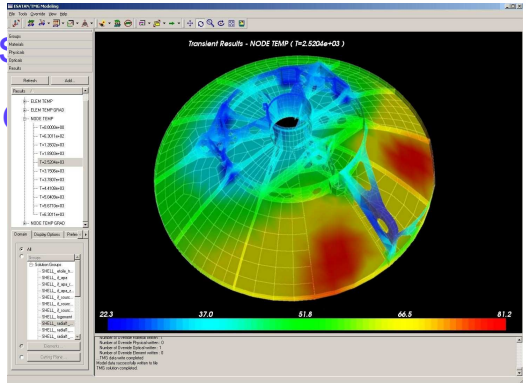
Henri Brouquet
(ALSTOM Aerospace)
Kevin Duffy
(Maya HTT)

ALSTOM

ESATAN / TMG 1.0

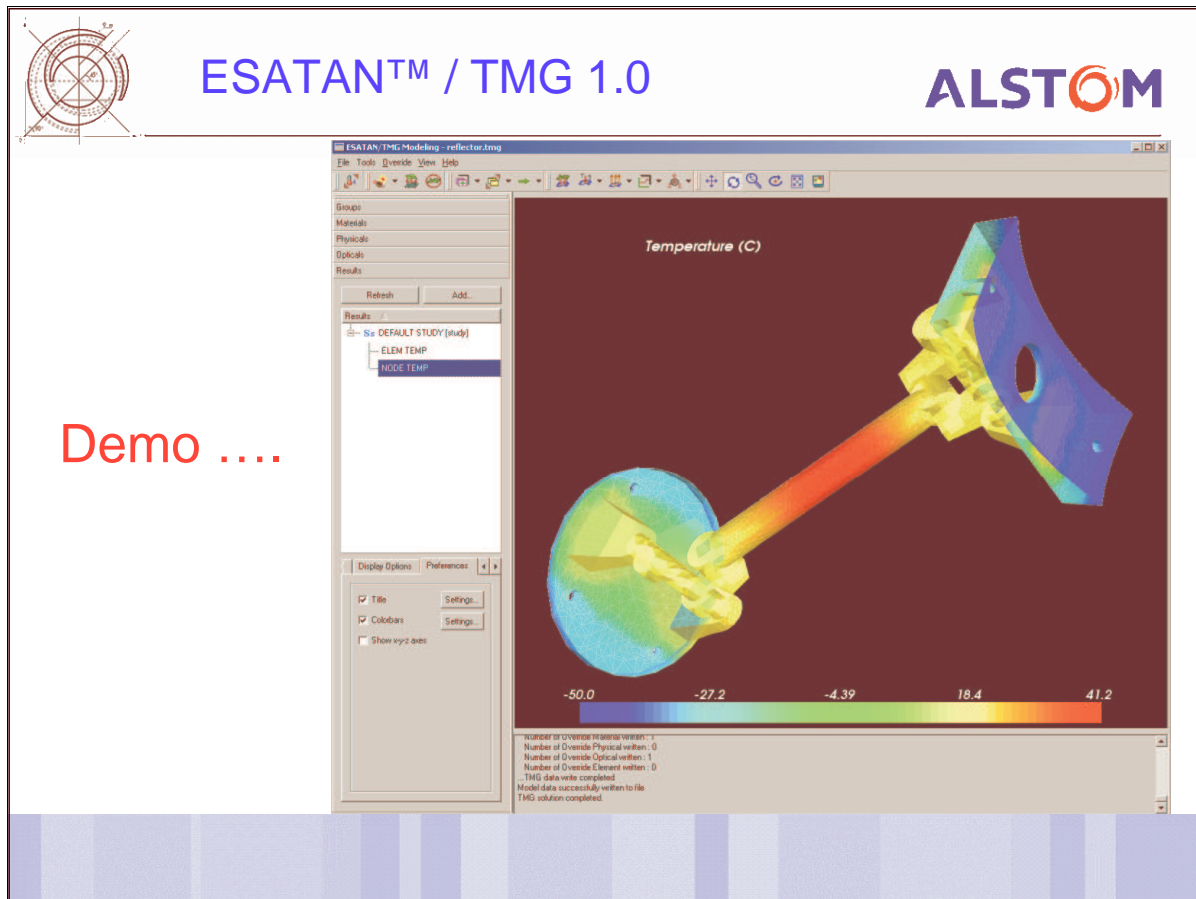
ALSTOM

- **ESATAN™/TMG** combines the strengths of ESATAN™ and TMG.
 - Versatility & robustness of ESATAN™
 - Powerful, FE like pre- and post-processing capabilities from TMG
 - An optimal solution for linking to FE based thermo-elastic analyses
- **ESATAN™/TMG 1.0** released September 2006



Courtesy of ALCATEL Alenia Space


- “Stand-alone” Solution -




Perfect Interface to FEA Model

ALSTOM

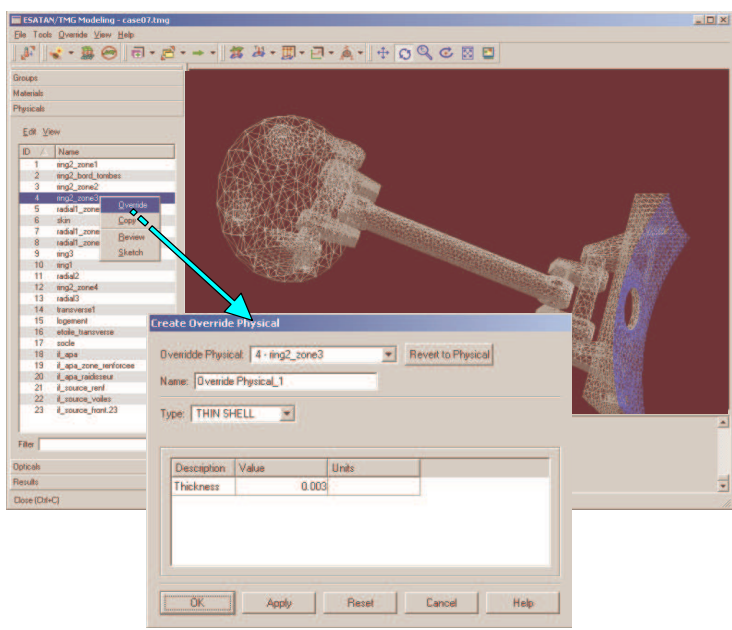
- Import of FE mesh and bulk data from:
 - I-DEAS Universal file
 - Nastran OP2 or Bulk Data
- Export Temperature Field to:
 - Nastran
 - ANSYS
- (re)Synchronisation with FEA model.




Rapid Definition of Model Data




- Model data
 - Material
 - Physical
 - Optical
- Imported from the FE model
 - Override possible
- Create model data in ESATAN™/TMG

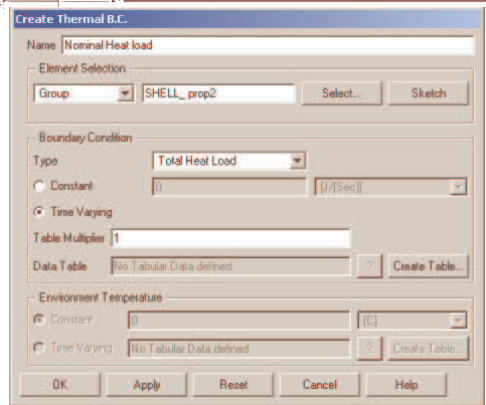




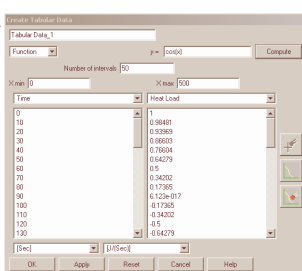
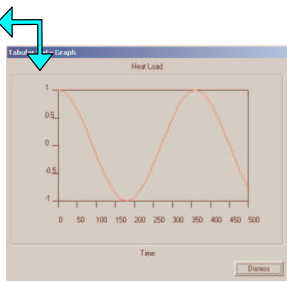
Boundary Conditions




- Thermal boundary conditions
 - Temperature
 - Heat Loads / Flux
 - Radiative / Convective




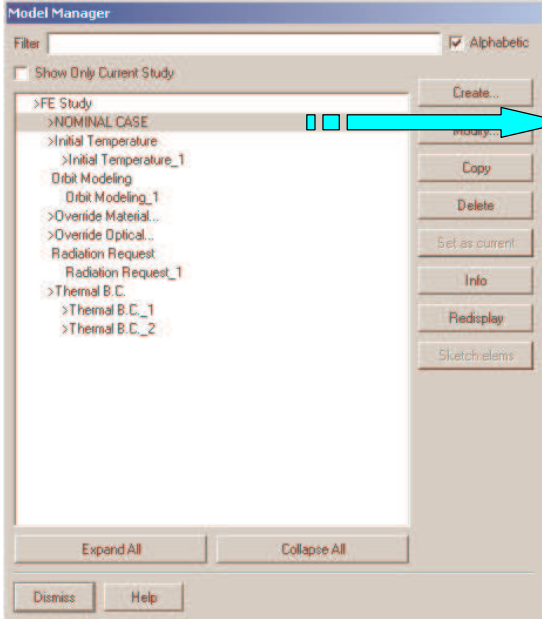
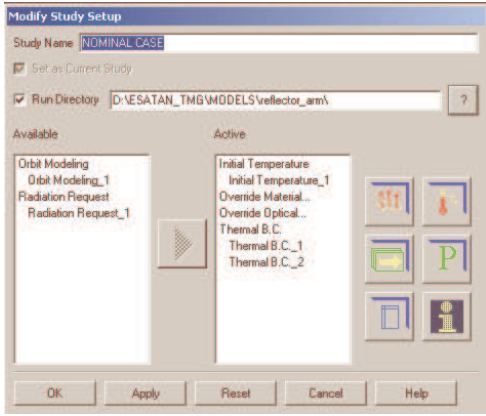
- Tabular data
 - Data points
 - Linear interpolation
 - Constant interval
 - function




Study Management




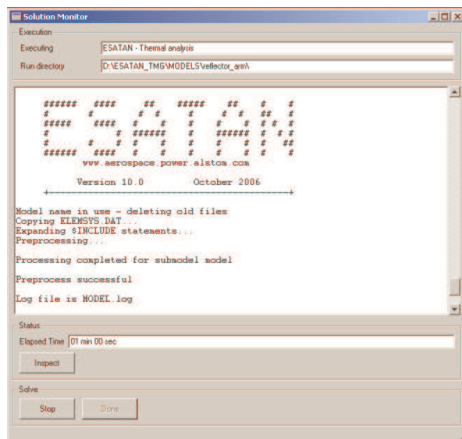
- Manage multiple sets of conditions
 - boundary cases
 - starting temperature
 - thermal couplings...

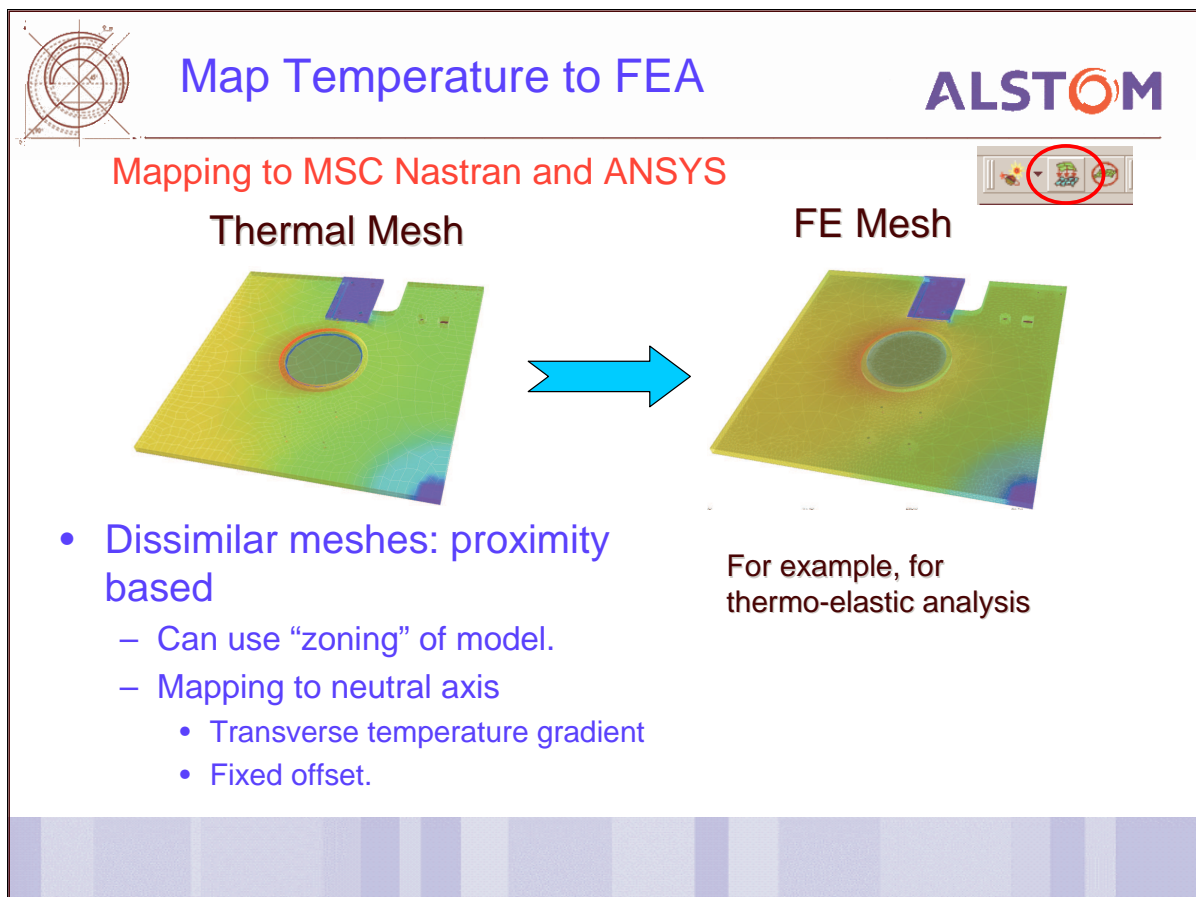
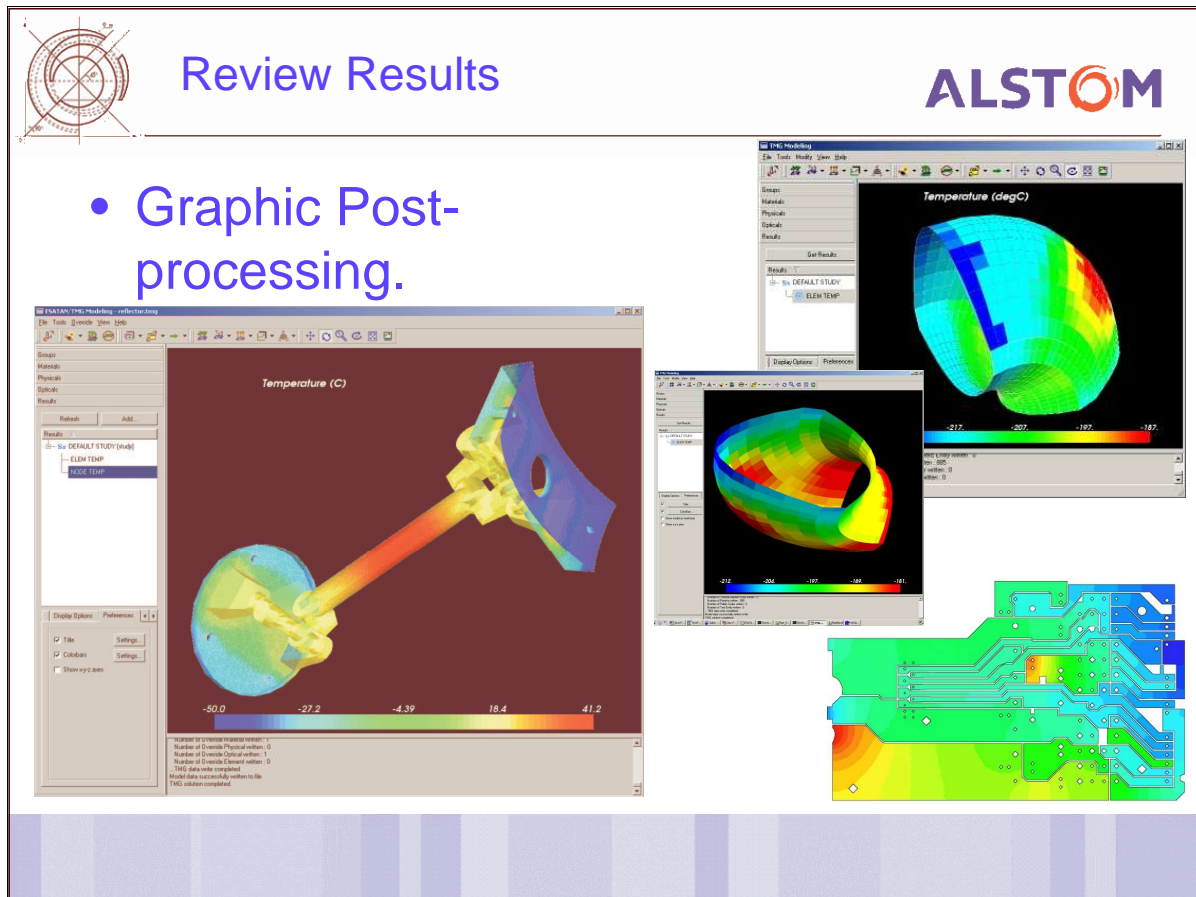


Thermal Solution



- Works with “standard” ESATAN™ but includes new ESATAN™ compatible FEMLIB library
 - Conjugate-Gradient Solver optimised for very large models
 - Interfacing routines for passing data back to the ESATAN/TMG environment
- Execution
 - Via interface
 - Run externally
 - Access to ESATAN™ input file
- Models can be exchanged with ESATAN™ Suite users



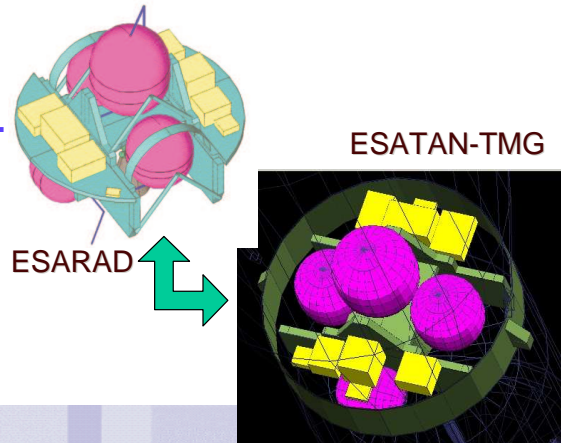




Other Key Features

ALSTOM

- Support for thin-shells, solid and beam elements.
- Import models from ESARAD, ThermicA and TSS.
- Non-geometric features.
- Element grouping.
- Element merging.



ESATAN/TMG: Summary

ALSTOM

ESATAN™ /TMG 1.0 Now available

- Retain
 - Flexibility and robustness of ESATAN
 - ESATAN™ users skills and knowledge
 - Model compatibility with ESATAN™ Thermal Suite
- Gain
 - Links with FEA
 - Analysis of arbitrary 3D geometry, including solids
 - Powerful pre/post-processing



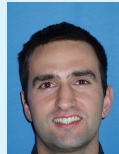
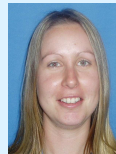
Workshop & Support Team

ALSTOM

- Next Training Session – 23-26 October 2006
- ESATAN™ / TMG User Workshop 27 Oct 2006

Support Contact Information:**<http://www.aerospace.power.alstom.com>**Email or phone us for a login if you don't have one already:
software.support@power.alstom.com

Tel: +44 (0) 116 284 5748

*Henri Brouquet**Bastien Bonnafous**Cass Porter***ALSTOM**www.aerospace.power.alstom.comwww.alstom.com

