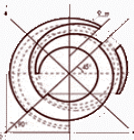




Thermal Network Viewer

ThermNV

Henri Brouquet



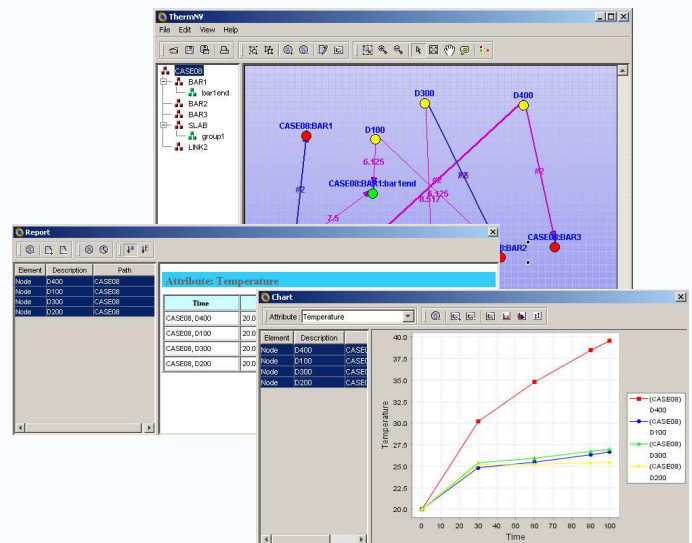
What is ThermNV for ?

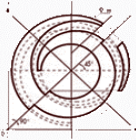


ThermNV provides an environment for the visualisation and inspection of thermal networks in a schematic form

Model validation (nodes, sub-models, conductors)

Post-processing (heat flow inspection, charting)





Key Features (1)

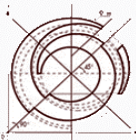
ALSTOM

ThermNV enables to:

Import GFF network file as generated by ESATAN & ThermXL v4

Visualise network schematic (nodes and conductors)

Layout schematics and save for import to similar networks



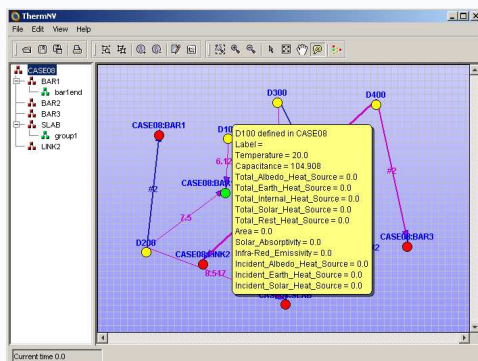
Key Features (2)

ALSTOM

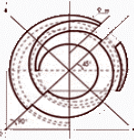
ThermNV enables to:

Browse model by sub-model

Create virtual sub-models (group of nodes)



Select the 'hover' data on nodes, conductors and sub-models for a rapid model inspection



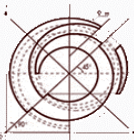
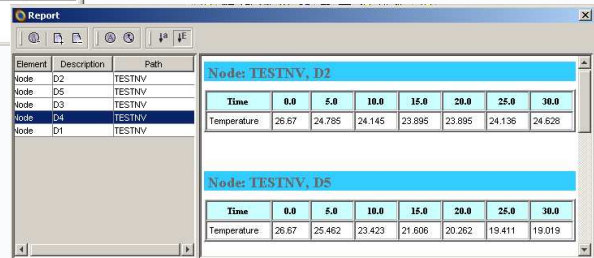
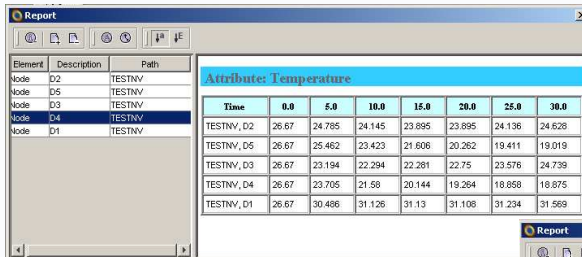
Key Features (3)



ThermNV enables to:

Inspect heat flows directly on schematic

Report on any model result data



Key Features (4)



ThermNV enables to:

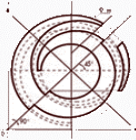
Chart results

line charts for time dependant model data

Bar charts for distribution data

Min/Max charts for limit inspection





ThermNV is a major enhancement to the product suite

model understanding

model validation

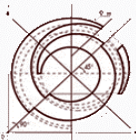
reporting

charting

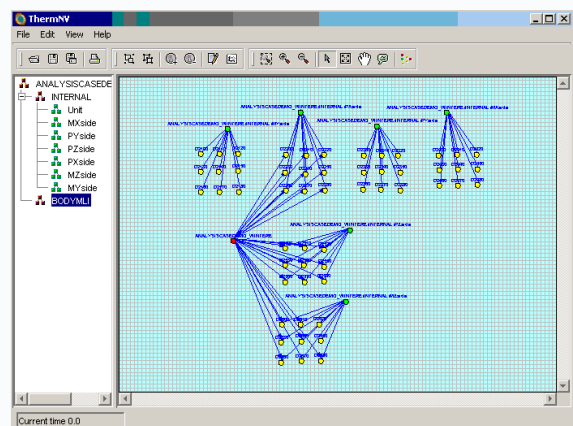
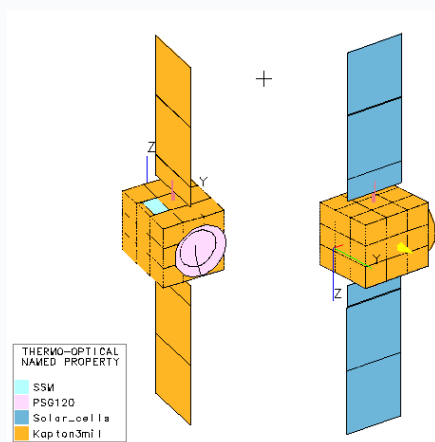
post-processing on heat fluxes, including visualisation

Pre-release version ThermNV 0.1 available

full release planned before Christmas



Go for a live demo of ThermNV



The Alstom logo features the word "ALSTOM" in a bold, sans-serif font. The letters "A", "L", "S", "T", and "M" are dark blue, while the "O" is a red circle with a white center. The logo is positioned on a white background that is partially framed by a large red curved shape on the left and top. The background of the entire image consists of vertical blue stripes of varying shades and some faint white curved lines.

ALSTOM

www.alstom.com