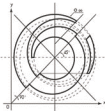




14th European Workshop on
Thermal and ECLS Software
ESTEC, The Netherlands
November 7-8, 2000

News From Software Support
Presented by Frédéric du Laurens d'Oiselay
ALSTOM Power Technology Centre

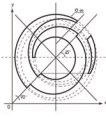
ALSTOM



Summary



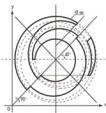
- **Status of software support**
 - Manpower
- **Status of products**
 - ESARAD v4
 - ESATAN v8.5
 - ESABASE / DEBRIS
 - ThermXL v1
- **On-going projects**
 - CPL
 - Web Site



User Support - Team

ALSTOM

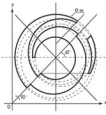
- **Technical support:**
 - Frédéric du Laurens / Henri Brouquet
 - Tel: +44 116 201 5911 (direct line / answering machine)
 - Fax: +44 116 201 5464
 - email: esa.support@power.alstom.com
- **Administrative support:**
 - Hélène Harris
 - Tel: +44 116 201 5521 (direct line)
 - Fax: +44 116 201 5463
 - email: helene.harris@power.alstom.com



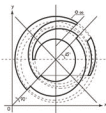
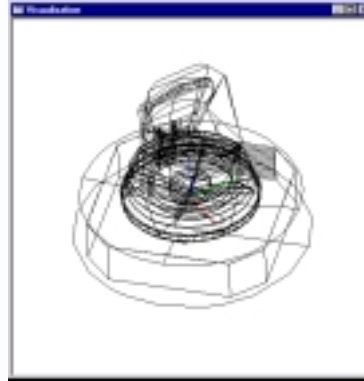
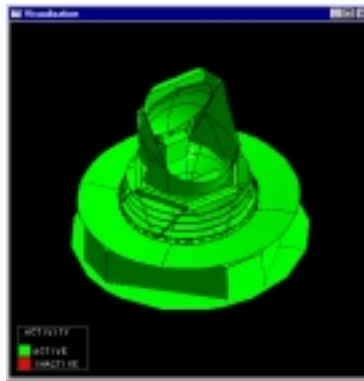
ESATAN 8.5 - Status

ALSTOM

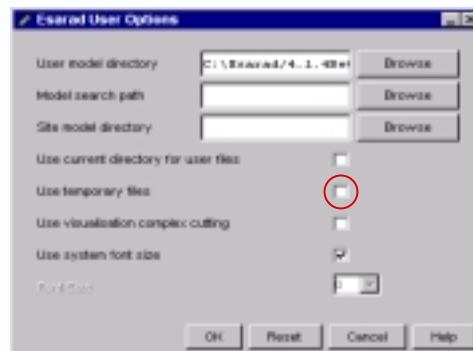
- **80 character-limit in \$LOCALS and \$CONSTANTS**
 - Do not exceed this limit when defining expressions
 - Valid for PC and all UNIX platforms
- **\$END_MODEL**
 - Add carriage return at end of file
 - Valid for PC only
- **FORTRAN compiler limitation**
 - Split user-defined subroutines
 - Avoid generated **MORTRAN** in **\$VARIABLES1** block
 - Valid for PC and all UNIX platforms

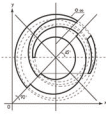


- Switching between visualisation modes may cause ESARAD to become unstable



- Use of temporary files may help in performance but can cause loading problems for some models
- Switch option off in GUI preferences:

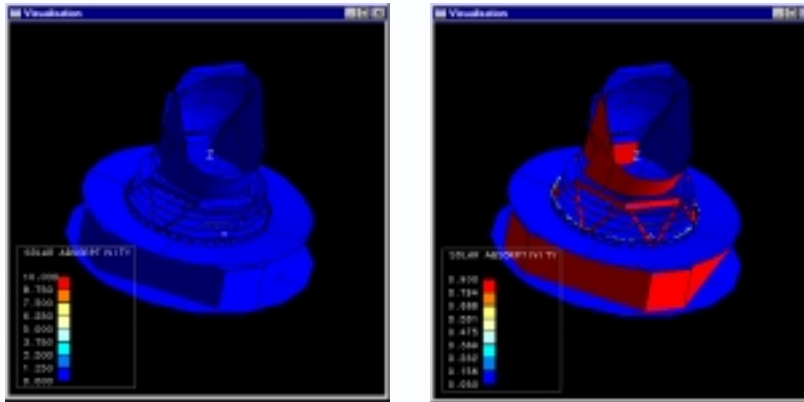




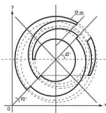
ESARAD 4.1 - Known Issues

ALSTOM

- Displaying α or ε will cause a scale problem



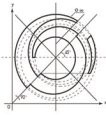
- Click on 'apply' twice to get the correct display



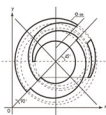
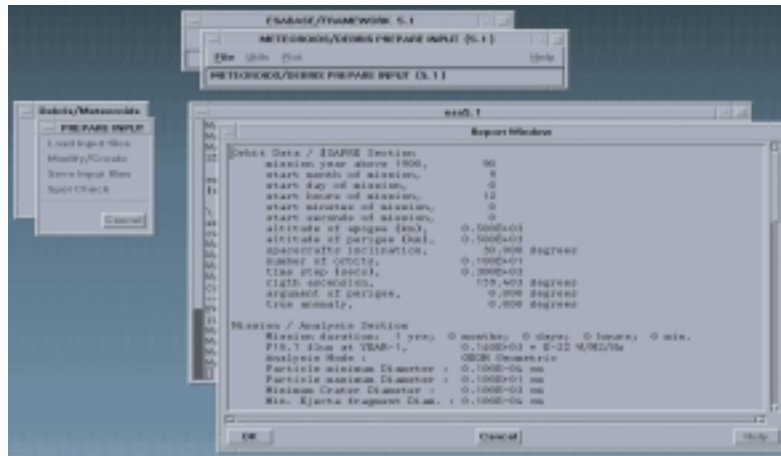
ESARAD 4.2 - Status

ALSTOM

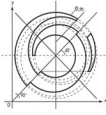
- Being currently thoroughly tested
 - GUI performance and stability much improved
 - Error messages more user-friendly
 - Much faster ESATAN File Formatting
- New features will include:
 - 2 degree-of-freedom capabilities
 - True Sun-pointing for model and panels
 - Cutting threshold of GRs
- Release expected by Xmas 2000



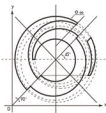
- New DEBRIS to be released by Xmas 2000



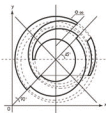
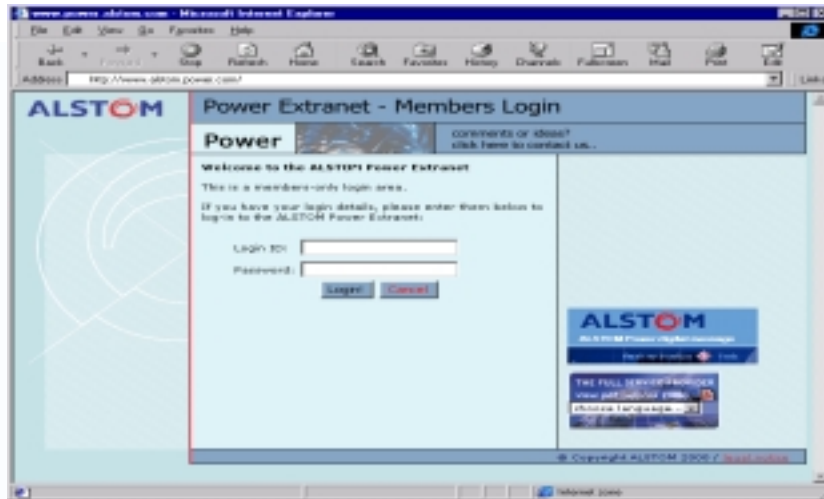
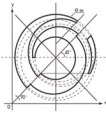
- ThermXL v-1.0
 - Stable and robust version
- ThermXL v-1.1
 - Variable heat capacity (eg temperature dependant)
 - But steady-state unavailable on some installations!
- Availability
 - ALSTOM Power FTP server (<ftp.power.alstom.com>)
 - Free version up to 21 nodes.



- Capillary Pump Loop
 - Capillary evaporator and filter
 - Two-phase reservoir
 - Tubes to model condenser and fluid pipes
 - Release to ESA in early 2001, to users mid-2001



- What it will offer?
 - Product information
 - 'Live' News
 - Self help FAQ
 - Downloads
 - Forum
 - Interactive software support [TBC]
- When?
 - Initial launch in early 2001



Contact by	Purpose	Needed information
Email	<ul style="list-style-type: none"> • Report problems As clearly as possible! • Provide all input files Attach input files Not plain text! log files only for info • Feature requests 	<ul style="list-style-type: none"> • Software version • Platform • Phone number • Contact name • Company
Phone call	<ul style="list-style-type: none"> • Quick questions • Status of requests 	<ul style="list-style-type: none"> • Software version • Platform • Phone number • Email • Contact name • Company